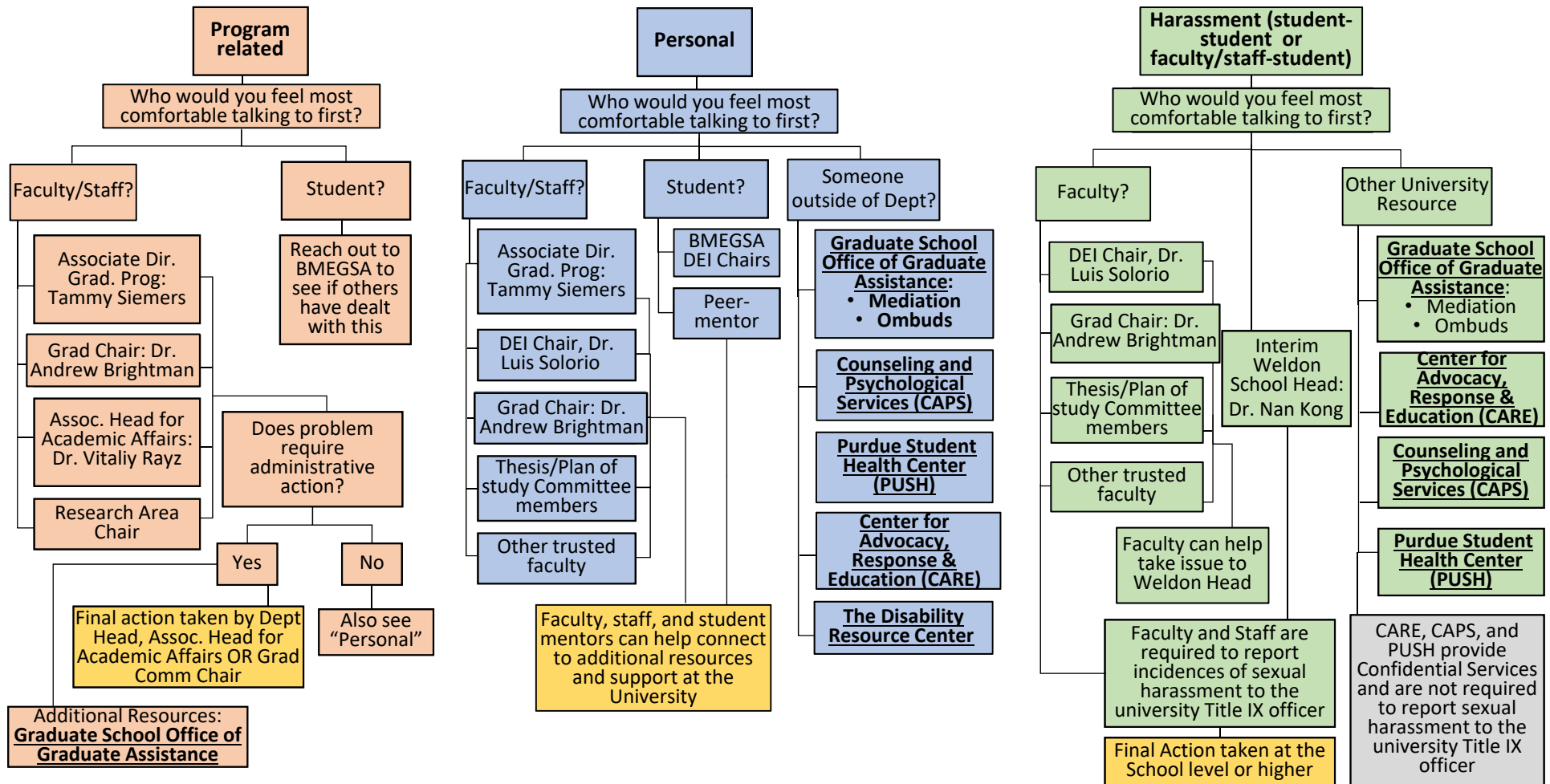


# BME Conflict Resolution Support: Graduate Students



Additional BME DEI Resources available at: <https://engineering.purdue.edu/BME/AboutUs/DiversityEquityInclusion>

Additional details and support for issues with Harassment and Discrimination, Accessibility, and Ethics and Compliance Resources are available through the Office of Institutional Equity: <https://www.purdue.edu/oie/index.php>  
(Adapted from Purdue EAPS Conflict support resources example)